



INDEPENDENT SCHOOLS
OF NEW ZEALAND

ISNZ Member School Statistics Report 2013

School Membership

ISNZ Member School membership as at 1 March 2013 stands at 43. Wanganui Collegiate School became a state integrated school in 2013 and is no longer eligible for membership. Auckland International College has joined the membership, effective 1 June 2013.

Student Numbers

Excluding the defection of Wanganui Collegiate to the state schools network, there was an *overall decrease in student numbers* of 203 or 0.9%. Central North Island rolls have fallen 9.8% (excluding Wanganui Collegiate School) while Auckland had the largest fall in numbers of 71 being a 0.6% decrease.

In 2013 the total number of students enrolled in ISNZ Member Schools is 22,476 (2012 23,293 students).

Boys' schools (ie having over 75% boys making up the school roll) represent 30.23% (13 boys' schools) of the total number of ISNZ Member Schools.

Girls' schools (ie having over 75% of girls making up the school roll) represent 23.26% (10 girls' schools) of the total number of ISNZ Member Schools.

Co-educational schools make up 46.51% (24 co-educational schools) of the total number of schools.

NB: These figures exclude preschool students.

NB: A member school may be included in more than one category, eg boys' school and co-educational school.

The *number of boys* enrolled in ISNZ Member Schools has decreased by 2.15% with boys making up 51.00% (2012 50.88%) of the total number of enrolments.

The *number of girls* enrolled in ISNZ Member Schools has decreased by 2.62% with girls making up 49.00% (2012 49.12%) of the total number of enrolments.

NB: These figures exclude preschool students.

Boarders

The defection of Wanganui Collegiate School has had a significant impact on the Boarder statistics for 2013.

There are 18 ISNZ Member Schools with boarders, three of which have boarders making up the majority of the school roll.

There are a total of 2,819 boarders in 2013, a decrease of 8.53% from 2012. Boarders represent 12.54% (2012 13.39%) of the total number of students enrolled at ISNZ Member Schools.

In 2013 there are *2001 boys enrolled as boarders*, a 7.4% decrease from 2012.

In 2013 there are *818 girls enrolled as boarders*, a decrease of 11.18% from 2012.

From the total of 2,819 boarders in 2013, *2336 are secondary school students* (82.87% of total boarders) and *483 are primary school students* (17.13% of total boarders).

Full Boarders vs Weekly Boarders

From the data provided there has been a decrease of 11.12% in the number of full boarders from 2,851 in 2012 to 2,534 in 2013.

Weekly Boarders have increased 23.38% from 231 in 2012 to 285 in 2013.

There are four schools with weekly boarders in 2013 compared to six in 2012.

Secondary Schools

There are 26 ISNZ Member Schools with secondary school students.

Secondary students represent 60.47% of all students (excluding preschool students) enrolled at ISNZ Member Schools.

There are a total of 13,390 secondary students in 2013 giving a 2.26% decrease from 2012.

Primary Students (including Y7 and Y8 students)

There are 39 ISNZ Member Schools with primary schools (90.70% of ISNZ Member Schools offer primary education).

There are a total of 9,086 primary students giving a 2.56% decrease of primary students enrolled in ISNZ Member Schools.

Primary school students represent 40.43% of all students (excluding preschool students) enrolled in ISNZ Member Schools.

Preschools

There are 14 schools with a preschool (13 in 2012). 32.56% of ISNZ Member Schools offer preschool education.

There are a total of 604 preschool students enrolled at ISNZ Member Schools, giving an increase of 1.34% from 2012.

Preschool students make up 2.62% of the total number of students enrolled in ISNZ Member Schools.

International Students

There are 30 ISNZ Member Schools with international students (28 in 2012).

There are a total of 503 international students (as at 1 March 2013) enrolled at ISNZ Member Schools, a 12.82% decrease from 2012.

International students make up 2.24% of the total student population (excluding preschool students) in ISNZ Member Schools.

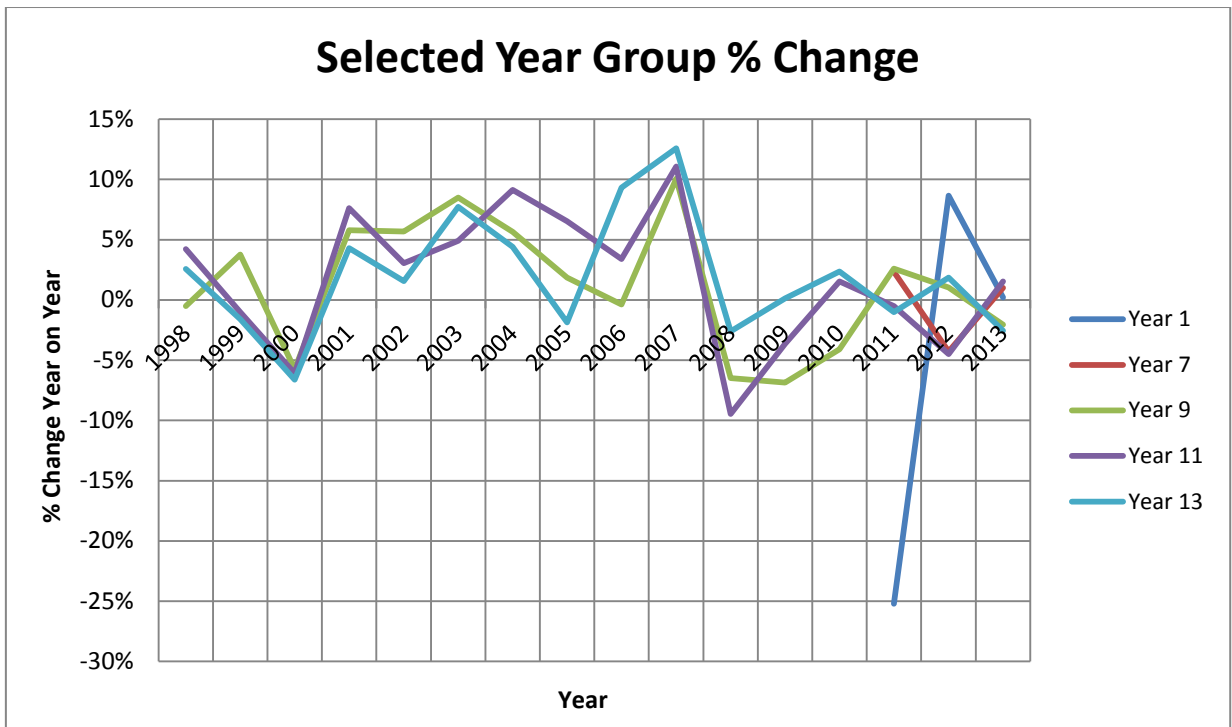
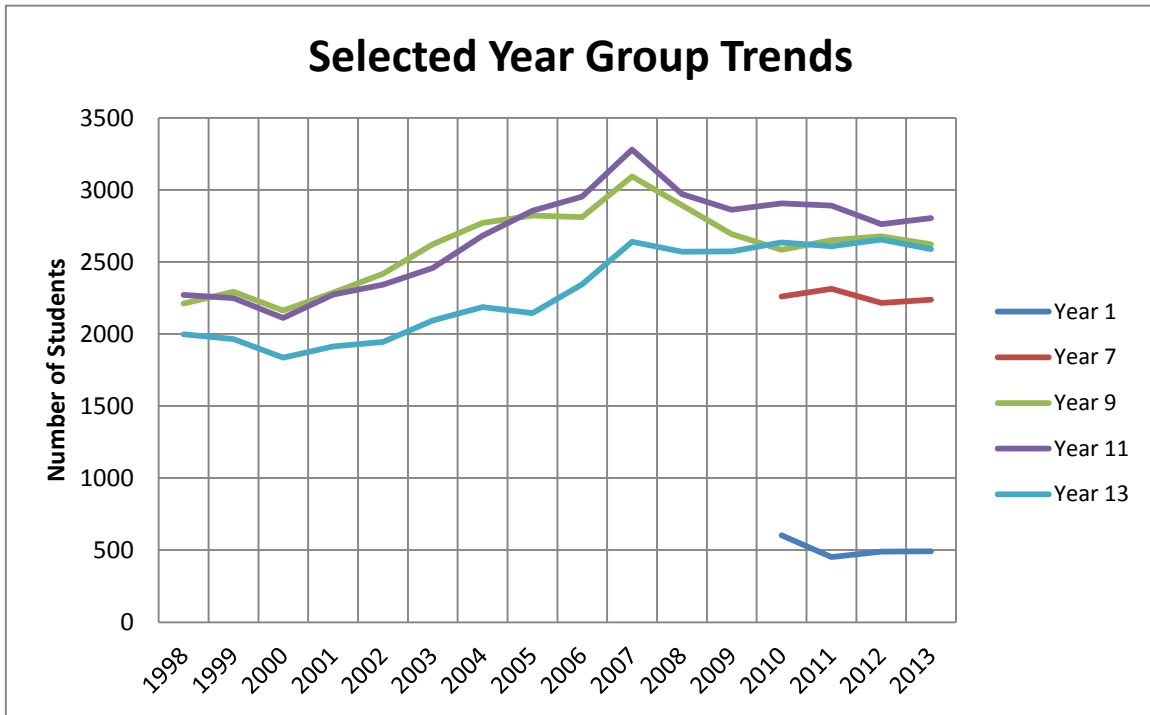
NB: The total number of international students in South Island schools stabilised for 2013 with an increase of 1, from 45 to 46.

Regional Student Numbers 2006 to 2013

Please find attached a summary of student numbers in ISNZ Member Schools for the past seven years analysed by Year groups and by region. These analyses show the following changes from 2012.

Auckland:	0.31% decrease in total student numbers
Waikato/Bay of Plenty:	1.63% decrease in total student numbers
Central North Island:	9.83% decrease in total student numbers
Wellington:	2.00% decrease in total student numbers
South Island:	0.17% decrease in total student numbers.
Total:	0.09% decrease in total student numbers.

Selected Year Group Trends



NB: These trends include changes that result from changes in membership.

NCEA and other School Qualifications

Of the 26 ISNZ Member Schools that submitted data in this category:

- x 7 schools offer only CIE (Cambridge International Examinations)
- x 5 schools offer only NCEA (National Certificate of Educational Achievement)
- x 7 schools offer NCEA and CIE
- x 9 schools offer IB (International Baccalaureate) and NCEA.

Student/Staff Ratio (excluding preschool staff)

The average staff/student ratio for 2013 is 11.09 students per teacher, compared to 11.44:1 students per teacher in 2012.

Grants/GST Analysis

Please find attached a summary of the GST paid on grants, tuition, boarding fees and additional foreign student tuition fees.

NB: GST for 2013 is shown at the 15% GST
ISNZ Member Schools for 2013 paid collectively \$10,030,083 more in GST than they received in government grants.

This statistical analysis is based on data provided by ISNZ Member Schools. Whilst all possible care is taken with checking any obvious omissions and anomalies, we still cannot assure total accuracy.

New member schools and changing school structures impact on year to year comparisons.

Deborah James

Executive Director

June 2013

Enclosed:

- 1 Regional Summary: student numbers 2006-2013
- 2 GST/Fees Summary 2013
- 3 Statistics spread sheet 1998-2013

Report sent to:

- 1 ISNZ Board Chairs
- 2 Principals
- 3 Bursars/Business Managers